

cp-mini | cp-mini

Befestigungssystem cp-mini	
Support system cp-mini	209
Zubehör	
Accessories	224

cp-mini

cp-mini





- Glashaltesystem für Brüstungsverglasungen aus A2
- Keine Glasbearbeitung erforderlich
- Modelle mit stufenloser Einstellung für den Einsatz an Treppengeländern
- Hohe Transparenz durch Eckbefestigung

- Glass supporting system for balustrade glazing in 304
- No glass preparation required
- Adjustable models for use on stair cases
- High transparency with corner support



Befestigungssystem cp-mini

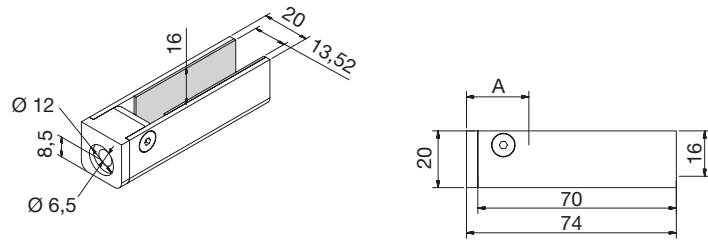
Support system cp-mini



[Eckige Form | Square shape]

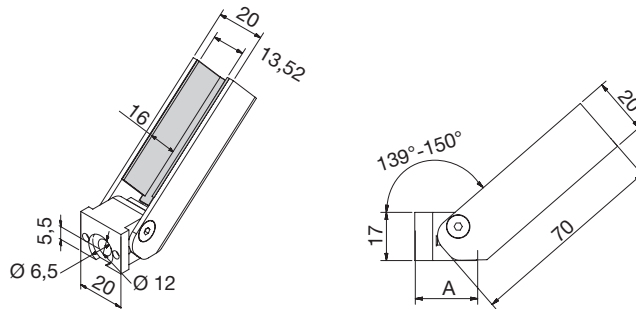
AbP = German National Technical Certification

cp-mini Edelstahl (A2) | cp-mini Stainless steel (304)



cp-mini				
Art.-Nr. Art.no.		Sicherheit Safety	Info	
9410VA	13,52 mm		180° gerade 180° straight	•

cp-mini Edelstahl (A2) | cp-mini Stainless steel (304)

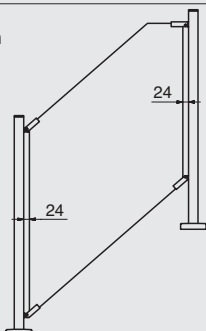


cp-mini				
Art.-Nr. Art.no.		Treppenneigung Stair inclination		
9411VA	13,52 mm	30° - 41°		•

Info

Abzugsmaß [A] | Reduction dimension

A = 24 mm



Oberfläche | Surface



VA

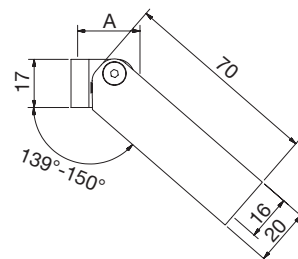
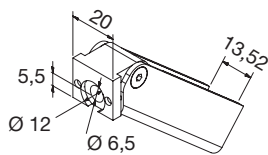
Zubehör | Accessories



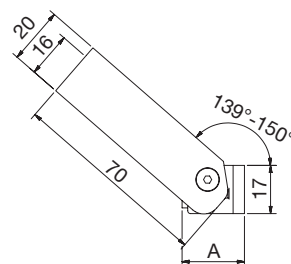
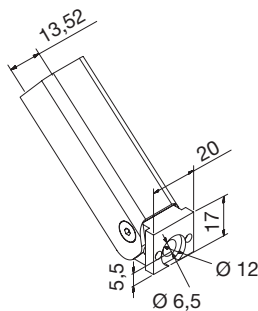
S691 2A2D6x30

*AbP = German National Technical Certification

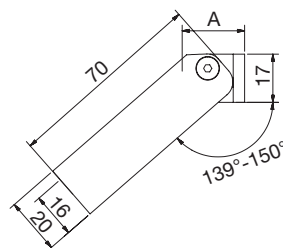
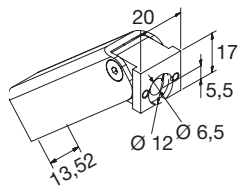
cp-mini Edelstahl (A2) | cp-mini Stainless steel (304)



cp-mini			
Art.-Nr. Art.no.		Treppenneigung Stair inclination	
9412VA	13,52 mm	30° – 41°	•

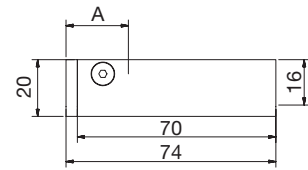
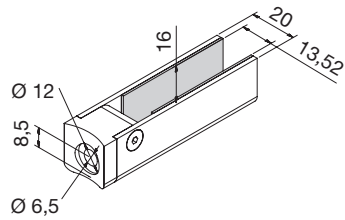


cp-mini			
Art.-Nr. Art.no.		Treppenneigung Stair inclination	
9413VA	13,52 mm	30° – 41°	•



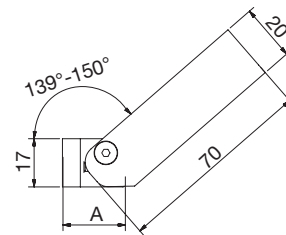
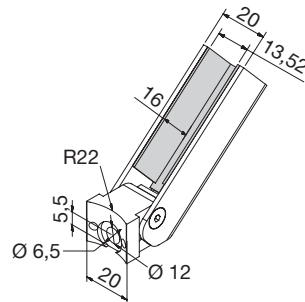
cp-mini			
Art.-Nr. Art.no.		Treppenneigung Stair inclination	
9414VA	13,52 mm	30° – 41°	•

cp-mini Edelstahl (A2) | cp-mini Stainless steel (304)



cp-mini			
Art.-Nr. Art.no.		Sicherheit Safety	Info
9420VA	13,52 mm		180° gerade 180° straight • R22

cp-mini Edelstahl (A2) | cp-mini Stainless steel (304)

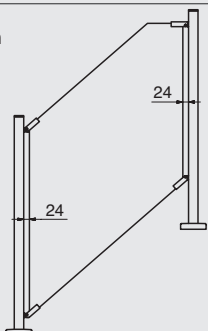


cp-mini			
Art.-Nr. Art.no.		Treppen-Neigung Stair inclination	Info
9421VA	13,52 mm	30° - 41°	• R22

Info

Abzugsmaß [A] | Reduction dimension

A = 24 mm

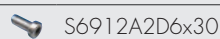


Oberflächen | Surface



VA

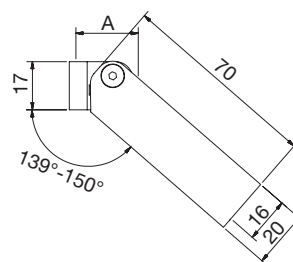
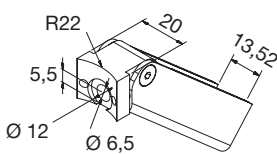
Zubehör | Accessories



S6912A2D6x30

* AbP = German National Technical Certification

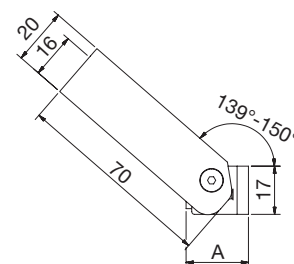
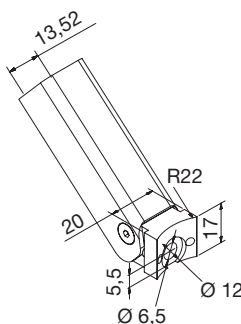
cp-mini Edelstahl (A2) | cp-mini Stainless steel (304)



cp-mini			
Art.-Nr. Art.no.		Treppenneigung Stair inclination	
9422VA	13,52 mm	30° – 41°	• R22



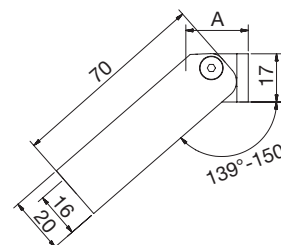
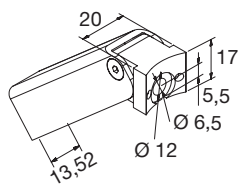
cp-mini Edelstahl (A2) | cp-mini Stainless steel (304)



cp-mini			
Art.-Nr. Art.no.		Treppenneigung Stair inclination	
9423VA	13,52 mm	30° – 41°	• R22



cp-mini Edelstahl (A2) | cp-mini Stainless steel (304)



cp-mini			
Art.-Nr. Art.no.		Treppenneigung Stair inclination	
9424VA	13,52 mm	30° – 41°	• R22