



Modell 63 x 45 mm
 Glasdicke | Glass thickness: 8 – 12,76 mm
 Seite | Page 161



Modell 55 x 60 mm
 Glasdicke | Glass thickness: 8 – 12,76 mm
 Seite | Page 165



Modell 52 x 38 mm
 Glasdicke | Glass thickness: 6 – 10,76 mm
 Seite | Page 170



Modell Ø 55 mm
 Glasdicke | Glass thickness: 8 – 12,76 mm
 Seite | Page 172



Klemmbefestigungen

Clamp fixtures



[Halbrunde Form | Semicircle shape]

*AbZ = German National Technical Approval

*AbP = German National Technical Certification

*ETB = Uniform technical building regulations



Klemmbefestigungen

Clamp fixtures

- Halbrunde Form, 63 x 45 mm
- Bis Glasstärke 12,76 mm
- In Zink, A2 und A4
- Bis 2100 mm Glasbreite nachgewiesen
- Umfangreiche Farbpalette

- Semicircular shape, 63 x 45 mm
- Glass thickness up to 12,76 mm
- In zinc, 304 and 316
- Verified for glass widths up to 2100 mm
- Extensive color range

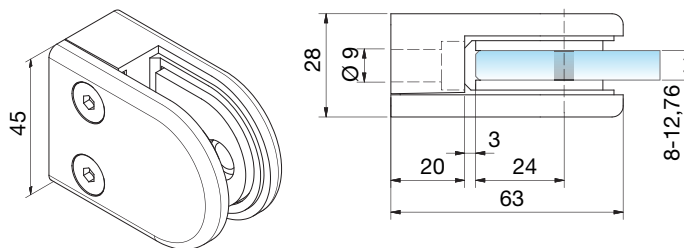


*AbZ = German National Technical Approval

*AbP = German National Technical Certification

*ETB = Uniform technical building regulations

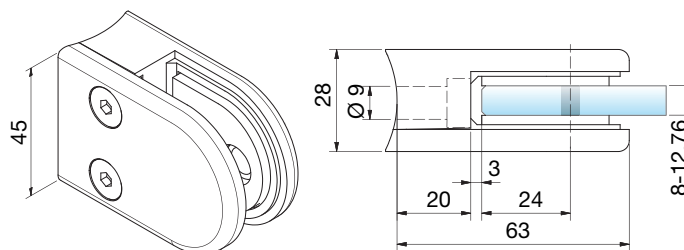
Zink | Zinc die cast (ZN, ZAMAK®)



MADE
IN
GERMANY

Klemmbefestigung Clamp fixture					
Art.-Nr. Art.no.			Sicherheit Safety		
4808	8,76 mm	8 mm	AbZ	ETB	•
4809	9,52 mm		AbZ		•
4810	10,76 mm	10 mm	AbZ		•
4811	11,52 mm		AbZ		•
4812	12,76 mm	12 mm	AbZ	AbP	•

Zink | Zinc die cast (ZN, ZAMAK®)



MADE
IN
GERMANY

Ø 42,4
Ø 60,3

Klemmbefestigung Clamp fixture					
Art.-Nr. Art.no.			Sicherheit Safety		
4842	8,76 mm	8 mm	AbZ	ETB	• R20/R30
4843	9,52 mm		AbZ		• R20/R30
4852	10,76 mm	10 mm	AbZ		• R20/R30
4854	11,52 mm		AbZ		• R20/R30
4853	12,76 mm	12 mm	AbZ	AbP	• R20/R30

Info

Glasaufbau | Glass composition



Gemäß AbZ/AbP auf www.pauli.de
According to AbZ/AbP on www.pauli.de

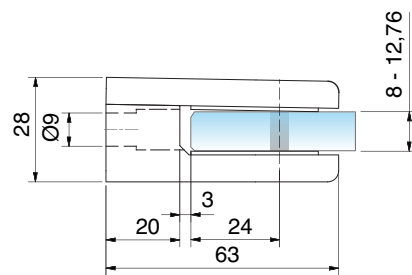
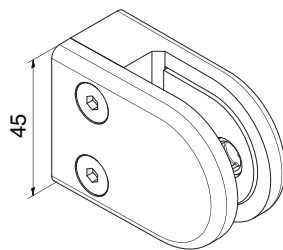
Zubehör | Accessories

9320VA

Oberfläche | Surface



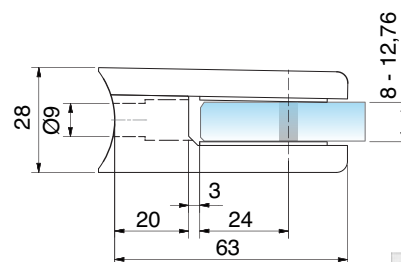
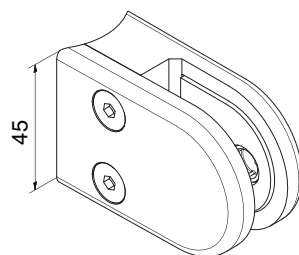
Edelstahl (A4) | Stainless steel (316)



Klemmbefestigung Clamp fixture				
Art.-Nr. Art.no.			Sicherheit Safety	
9302	8,76 mm	8 mm	AbZ	•
9300	9,52 mm		AbZ	•
9303	10,76 mm	10 mm	AbZ ETB	•
9301	11,52 mm		AbZ	•
9304	12,76 mm	12 mm	AbZ AbP	•



Edelstahl (A4) | Stainless steel (316)



Klemmbefestigung Clamp fixture				
Art.-Nr. Art.no.			Sicherheit Safety	
9306	8,76 mm	8 mm	AbZ	• R22
9305	9,52 mm		AbZ	• R22
9307	10,76 mm	10 mm	AbZ ETB	• R22
9309	11,52 mm		AbZ	• R22
9308	12,76 mm	12 mm	AbZ AbP	• R22

Info

Glasaufbau | Glass composition

Gemäß AbZ/AbP auf www.pauli.de
According to AbZ/AbP on www.pauli.de

Oberfläche | Surface



VA1

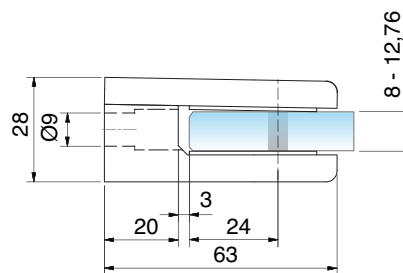
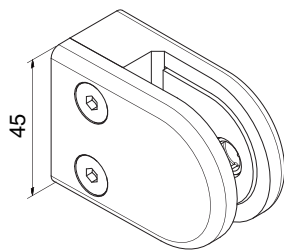


VA2

Zubehör | Accessories

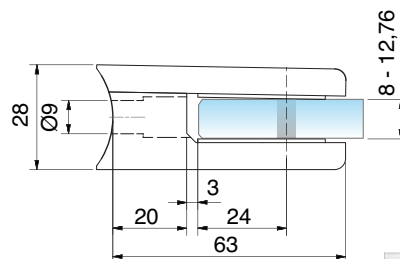
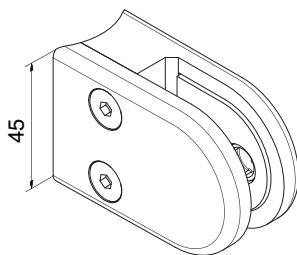
4820VA

Edelstahl (A2) | Stainless steel (304)



Klemmbefestigung Clamp fixture				
Art.-Nr. Art.no.			Sicherheit Safety	
9302VA2-A2	8,76 mm	8 mm	AbZ	•
9300VA2-A2	9,52 mm		AbZ	•
9303VA2-A2	10,76 mm	10 mm	AbZ	•
9301VA2-A2	11,52 mm		AbZ	•
9304VA2-A2	12,76 mm	12 mm	AbZ AbP	•

Edelstahl (A2) | Stainless steel (304)



Klemmbefestigung Clamp fixture				
Art.-Nr. Art.no.			Sicherheit Safety	
9306VA2-A2	8,76 mm	8 mm	AbZ	• R22
9305VA2-A2	9,52 mm		AbZ	• R22
9307VA2-A2	10,76 mm	10 mm	AbZ	• R22
9309VA2-A2	11,52 mm		AbZ	• R22
9308VA2-A2	12,76 mm	12 mm	AbZ AbP	• R22

Info

Glasaufbau | Glass composition



Gemäß AbZ/AbP auf www.pauli.de
According to AbZ/AbP on www.pauli.de

Zubehör | Accessories

4820VA

Oberfläche | Surface



VA2



Klemmbefestigungen

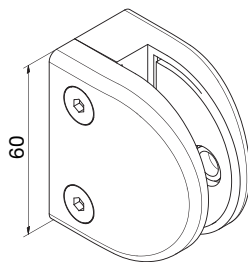
Clamp fixtures

- Halbrunde Form, 55 x 60 mm
- Bis Glasstärke 12,76 mm
- In Zink, A2 und A4
- Bis 2100 mm Glasbreite nachgewiesen
- Auch zugelassen mit Sicherungsstift
- Semicircular shape, 55 x 60 mm
- Glass thickness up to 12,76 mm
- In zinc, 304 and 316
- Verified glass widths up to 2100 mm
- Also approved with safety stud

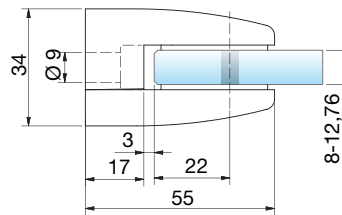


- *AbZ = German National Technical Approval
- *AbP = German National Technical Certification
- *ETB = Uniform technical building regulations

Zink | Zinc die cast (ZN, ZAMAK®)

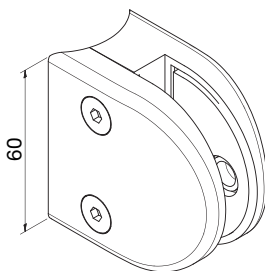


MADE
IN
GERMANY

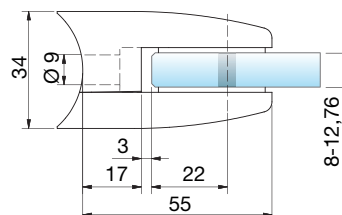


Klemmbefestigung Clamp fixture					
Art.-Nr. Art.no.			Sicherheit Safety	Auch zugelassen mit Also approved with	
4813	8,76 mm	8 mm	AbZ		•
4821	9,52 mm		AbZ		•
4814	10,76 mm	10 mm	AbZ		•
9013	11,52 mm		AbZ		•
9014	12,76 mm	12 mm	AbZ AbP		•

Zink | Zinc die cast (ZN, ZAMAK®)



MADE
IN
GERMANY



Klemmbefestigung Clamp fixture					
Art.-Nr. Art.no.			Sicherheit Safety	Auch zugelassen mit Also approved with	
4816	8,76 mm	8 mm	AbZ		• R22
4827	9,52 mm		AbZ		• R22
4817	10,76 mm	10 mm	AbZ		• R22
9016	11,52 mm		AbZ		• R22
9017	12,76 mm	12 mm	AbZ AbP		• R22

Info

Glasaufbau | Glass composition



Gemäß AbZ/AbP auf www.pauli.de
According to AbZ/AbP on www.pauli.de

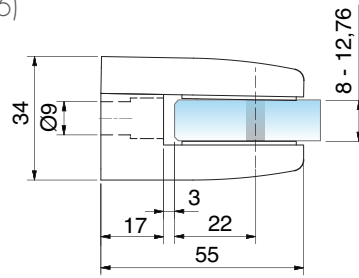
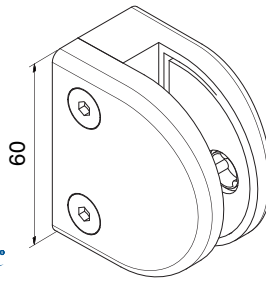
Zubehör | Accessories

9320VA

Oberfläche | Surface



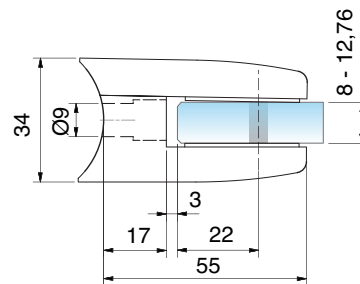
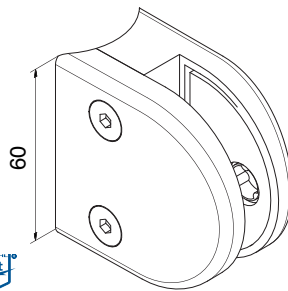
Edelstahl (A4) | Stainless steel (316)



Klemmbefestigung | Clamp fixture

Art.-Nr. Art.no.			Sicherheit Safety	Auch zugelassen mit Also approved with	
9322VA2	8,76 mm	8 mm	AbZ		•
9320VA2	9,52 mm		AbZ		•
9323VA2	10,76 mm	10 mm	AbZ		•
9321VA2	11,52 mm		AbZ		•
9324VA2	12,76 mm	12 mm	AbZ AbP		•

Edelstahl (A4) | Stainless steel (316)



Klemmbefestigung | Clamp fixture

Art.-Nr. Art.no.			Sicherheit Safety	Auch zugelassen mit Also approved with	
9326VA2	8,76 mm	8 mm	AbZ		• R22
9325VA2	9,52 mm		AbZ		• R22
9327VA2	10,76 mm	10 mm	AbZ		• R22
9329VA2	11,52 mm		AbZ		• R22
9328VA2	12,76 mm	12 mm	AbZ AbP		• R22

Info

Glasaufbau | Glass composition



Gemäß AbZ/AbP auf www.pauli.de
According to AbZ/AbP on www.pauli.de

Zubehör | Accessories

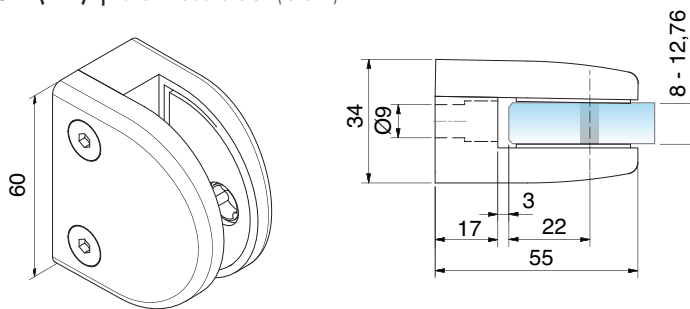
9320VA

Oberfläche | Surface



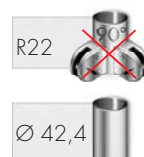
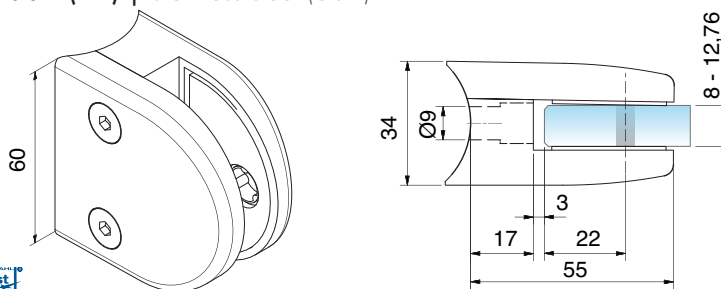
VA2

Edelstahl (A2) | Stainless steel (304)



Klemmbefestigung Clamp fixture					
Art.-Nr. Art.-no.			Sicherheit Safety	Auch zugelassen mit Also approved with	
9322VA2-A2	8,76 mm	8 mm	AbZ		•
9320VA2-A2	9,52 mm		AbZ		•
9323VA2-A2	10,76 mm	10 mm	AbZ		•
9321VA2-A2	11,52 mm		AbZ		•
9324VA2-A2	12,76 mm	12 mm	AbZ AbP		•

Edelstahl (A2) | Stainless steel (304)



Klemmbefestigung Clamp fixture					
Art.-Nr. Art.-no.			Sicherheit Safety	Auch zugelassen mit Also approved with	
9326VA2-A2	8,76 mm	8 mm	AbZ		• R22
9325VA2-A2	9,52 mm		AbZ		• R22
9327VA2-A2	10,76 mm	10 mm	AbZ		• R22
9329VA2-A2	11,52 mm		AbZ		• R22
9328VA2-A2	12,76 mm	12 mm	AbZ AbP		• R22

Info

Glasaufbau | Glass composition



Gemäß AbZ/AbP auf www.pauli.de
According to AbZ/AbP on www.pauli.de

Zubehör | Accessories

9320VA

Oberfläche | Surface



VA2



Klemmbefestigungen

Clamp fixtures

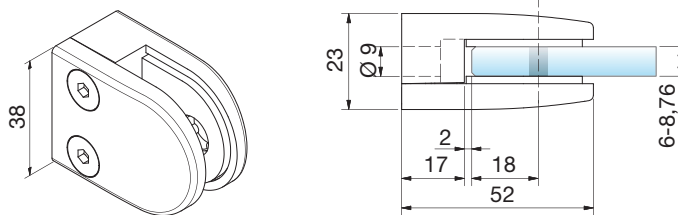
- Halbrunde Form, 52 x 38 mm
- Bis Glasstärke 10,76 mm
- In Zink und A4

- Semicircular shape, 52 x 38 mm
- Glass thickness up to 10,76 mm
- In zinc and 316





Zink | Zinc die cast (ZN, ZAMAK®)



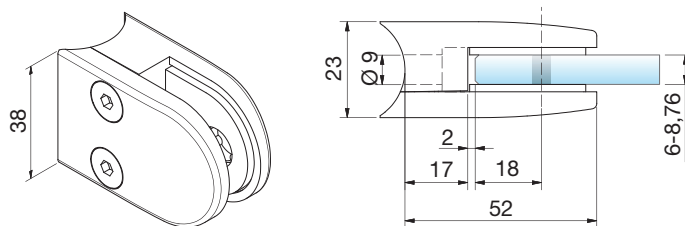
MADE
IN
GERMANY

Klemmbefestigung | Clamp fixture

Art.-Nr. Art.-no.			
4819	6,76 mm	6 mm	•
4818	8,76 mm	8 mm	•



Zink | Zinc die cast (ZN, ZAMAK®)



MADE
IN
GERMANY



Klemmbefestigung | Clamp fixture

Art.-Nr. Art.-no.			
4823	6,76 mm	6 mm	• R15/R20
4822	8,76 mm	8 mm	• R15/R20

Info

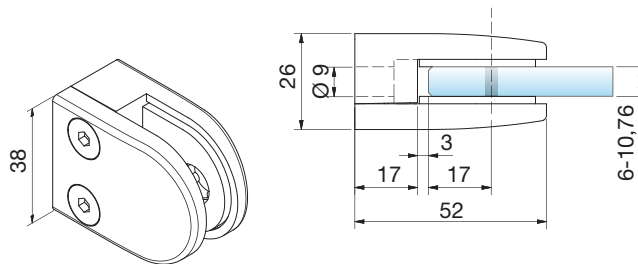
Zubehör | Accessories

4824VA

Oberfläche | Surface



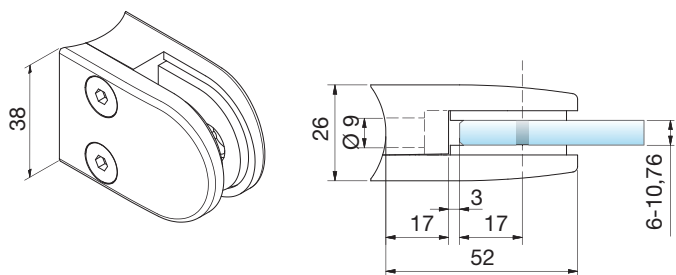
Edelstahl (A4) | Stainless steel (316)



Klemmbefestigung Clamp fixture			
Art.-Nr. Art.no.			
9312	6,76 mm	6 mm	•
9313	8,76 mm	8 mm	•
9314	10,76 mm	10 mm	•



Edelstahl (A4) | Stainless steel (316)



Klemmbefestigung Clamp fixture			
Art.-Nr. Art.no.			
9316	6,76 mm	6 mm	• R16/R21
9317	8,76 mm	8 mm	• R16/R21
9318	10,76 mm	10 mm	• R16/R21

Info

Zubehör | Accessories

4820VA

Oberfläche | Surface



VA1

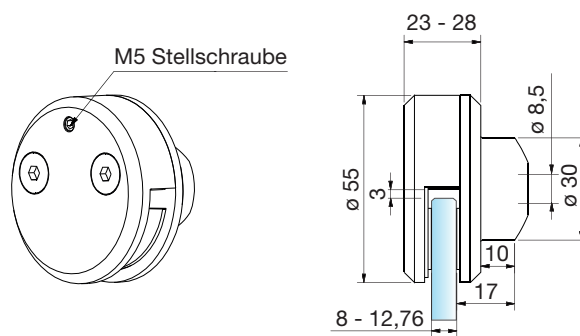


VA2

Radius R21 nur in VA2 lieferbar
Radius R21 only available in VA2



Zink | Zinc die cast (ZN, ZAMAK®)



MADE
IN
GERMANY

Ø 42,4

Klemmbefestigung | Clamp fixture

Art.-Nr.
Art.no.



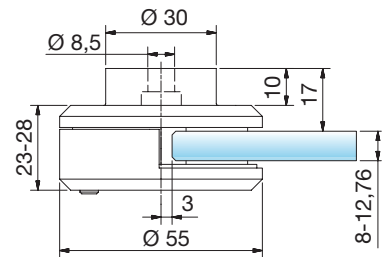
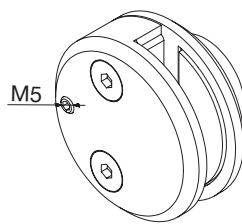
4861

8,76 - 12,76 mm

8 - 12 mm

• R23

Zink | Zinc die cast (ZN, ZAMAK®)



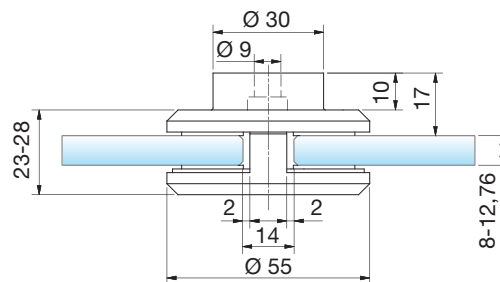
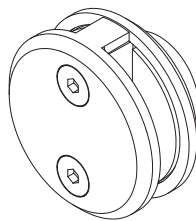
MADE
IN
GERMANY

Klemmbefestigung | Clamp fixture

Art.-Nr. Art.no.			
4860	8,76 – 12,76 mm	8 – 12 mm	•



Zink | Zinc die cast (ZN, ZAMAK®)



MADE
IN
GERMANY

Klemmbefestigung | Clamp fixture

Art.-Nr. Art.no.			
4866	8,76 – 12,76 mm	8 – 12 mm	•

Info

- Ideal für Ecklösungen
- Kein Bedarf an Eckpfosten
- Geschlossene Glasfelder: ideal für Wind- und Sichtschutz
- Keine Glasbohrung notwendig

- Ideal for corner solutions
- Corner posts not necessary
- Closed glass panels. Ideal for wind and privacy protection
- No glass drilling necessary

Oberfläche | Surface



RAL



ZNO



ZN1



ZN5



ZN12



ZN22



ZN22-K