

Montageanleitung
assembly instructions



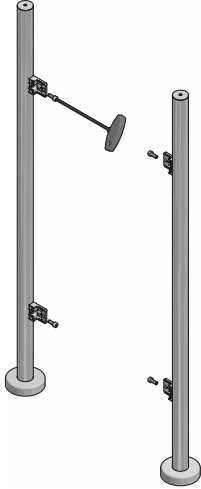
4845VA2-A2-V
4845VA2-A4-V

und
and

4847VA2-A2-V
4847VA2-A4-V

Klemmbefestigung
clamp fixtures

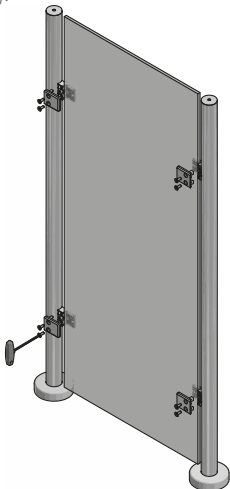
1.
Klemmenunterteil am Pfosten anschrauben
Fasten the lower part of the clamp to the post



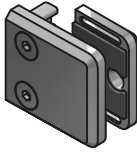
2.
EPDM in Klemmenunterteil einsetzen
Insert the EPDM in the lower part of the clamp



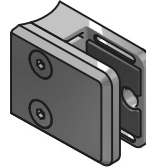
3.
Glas positionieren, Klemmenoberteil mit entsprechendem EPDM in Position bringen und festschrauben (max. 8 Nm)
Position the glass, bring the upper part of the clamp into position with the appropriate EPDM orientation and tighten (max. 8 Nm).



4845VA2-A2-V
4845VA2-A4-V



4847VA2-A2-V
4847VA2-A4-V

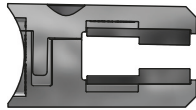
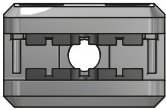


Klemme in A2 bzw. A4 I clamp fixtures in 304 and 316
VK-Anschluß I flat connection
Glasstärke I glass thickness:
8+8,76 mm - 10+10,76 mm - 12+12,76 mm

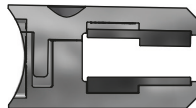
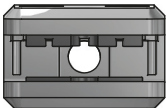
Klemme in A2 bzw. A4 I clamp fixtures in 304 and 316
RR-Anschluß I round connection
Glasstärke I glass thickness:
8+8,76 mm - 10+10,76 mm - 12+12,76 mm

Die mitgelieferten EPDM-Einlagen können für alle unten stehenden Glasstärken verwendet werden. Hierzu muss nur die EPDM-Einlage, wie in der Abbildung unten, für die entsprechende Glasstärke eingebaut bzw. gewechselt werden.

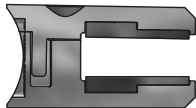
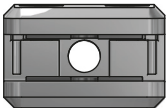
The EPDM gaskets supplied can be used for all of the glass thicknesses listed below. For this, simply select the EPDM gasket orientation as shown in the illustration below for the corresponding glass thickness.



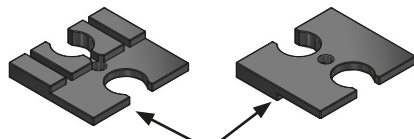
Einbau EPDM für
8+8,76 mm Glas
Installation of EPDM gaskets
for 8+8.76 mm glass



Einbau EPDM für
10+10,76 mm Glas
Installation of EPDM gaskets for
10+10.76 mm glass



Einbau EPDM für
12+12,76 mm Glas
Installation of EPDM gaskets for
12+12.76 mm glass



EPDM484X-V
EPDM zu I for 4845VA2-A2-V/4847VA2-A2-V
4845VA2-A4-V/4847VA2-A4-V



Pauli+Sohn GmbH

Eisenstraße 2
51545 Waldbröl
Telefon: +49(0)2291-9206-0

www.pauli.de
info@pauli.de

Technische Änderungen der Pauli+Sohn GmbH vorbehalten!
Technical changes are subject to Pauli+Sohn GmbH!

Versionsnr.: A.1 – Stand: August 2022